



Seating Collection Price List & Specifications

Effective
February 6
2017

January 31, 2017

Price Adjustment:

This price book will take effect for any order received on or after February 6, 2017.

The price adjustment reflects a reduction in price to Oroblanco task chairs and an increase to the Crazy Horse wood side chair.

idesk

TABLE OF CONTENTS

| | |
|---|----|
| Curva Specifications | 4 |
| Curva Models | 5 |
| Curvinna Specifications | 9 |
| Curvinna Models | 10 |
| Crazy Horse Specifications | 11 |
| Crazy Horse Models | 12 |
| Muse Specifications | 13 |
| Muse Models | 14 |
| Tikal Specifications | 15 |
| Tikal Models | 16 |
| Pommerac Specifications | 18 |
| Pommerac Models | 19 |
| Oroblanco Specifications | 20 |
| Oroblanco Models | 21 |
| Ambarella Specifications | 24 |
| Ambarella Models | 25 |
| InStock Textiles & Materials | 26 |
| Momentum Textiles | 28 |
| Textile Pattern List & Grades | 29 |
| Terms & Conditions | 30 |
| Contact Information | 32 |

CURVA



- Frame: Conference and executive in cast aluminum or glass reinforced nylon structure. Stool in nylon only, lounge in aluminum only.
- Finish: brushed aluminum titanium finish or nylon in a matte charcoal gray finish.
- Lumbar support: structure shapes the back to form a natural lumbar support.
- Bases: Conference, executive and stool have 5-star bases, the lounge has a 4-star while the table has a 3-star base.
- Mechanism: Offset recline pivot with central tension adjustment. Conference and executive are swivel, tilt and height adjustable, stool is swivel, height adjustable and no tilt while the lounge is swivel, tilt and fixed height.
- Tilt: Side-mounted lock lever.
- Pneumatic seat height adjustment: task [4"], stool [8"].
- High and mid back frames are available for conference, executive and lounge while stool has mid back frame only.
- Stool: with compression self-braking casters.
- Seat and back upholstery: metallic Graphite mesh or Monza Graphite Black leather. High back models come standard with Monza Graphite Black leather headrest. Leather upholstery over mesh suspension only available with aluminum frame on conference and executive models.
- Side table: Cast aluminum 3-star base matching finish with chair. Top: 1/2" tempered silk screened back painted white glass. 27" diameter. Height: 12".
- Textile durability for seat and back mesh, 100,000 double-rubs. Passes Cal Technical Bulletin 117-2013.
- ANSI/BIFMA X5.1 General Purpose Office Chair certified.
- Made with 38% post-consumer (PC) & 42% pre-consumer (PI) aggregate recycled content.
- Dimensions: width [at arms] 22.75"; [between arms] 20", [armless] 18.75"; seat height 17"-21"; seat depth 18"; seat to top of back 18.5" [medium back] or 25.5" [high back]. stool seat height 23"-31". Lounge chair seat height: 14".
- Weight capacity: 250 lbs.
- Ships ready to assemble to minimize transportation carbon footprint.
- Limited Lifetime Warranty.
(Please see details on our website)

CURVA



Aluminum High Back Leather
Executive & Conference

| Product Code | | D | W | H | Weight lbs. | Cubic ft. | Cartons | List Price |
|---------------|---------|-----|-----|---------|-------------|-----------|---------|----------------|
| CUR101 | Overall | 24½ | 22¾ | 41½-45½ | 34 | 10.21 | 1 | <u>\$1,310</u> |
| | Seat | 17¾ | 19 | 17-21 | | | | |
| | Back | n/a | 18½ | 25½ | | | | |
| | Carton | 35 | 19¾ | 25½ | | | | |



Aluminum Mid Back Leather
Executive & Conference

| | | | | | | | | |
|---------------|---------|-----|-----|---------|----|------|---|----------------|
| CUR103 | Overall | 24½ | 22¾ | 34½-38½ | 30 | 8.49 | 1 | <u>\$1,231</u> |
| | Seat | 17¾ | 19 | 17-21 | | | | |
| | Back | n/a | 18½ | 18½ | | | | |
| | Carton | 29¼ | 19¾ | 25½ | | | | |



Aluminum High Back Mesh
Executive & Conference

| | | | | | | | | |
|---------------|---------|-----|-----|---------|----|-------|---|----------------|
| CUR105 | Overall | 24½ | 22¾ | 41½-45½ | 31 | 10.21 | 1 | <u>\$1,048</u> |
| | Seat | 18 | 19 | 17-21 | | | | |
| | Back | n/a | 18½ | 25½ | | | | |
| | Carton | 35 | 19¾ | 25½ | | | | |



Aluminum Mid Back Mesh
Executive & Conference

| | | | | | | | | |
|---------------|---------|-----|-----|---------|----|------|---|--------------|
| CUR107 | Overall | 24½ | 22¾ | 34½-38½ | 29 | 8.49 | 1 | <u>\$892</u> |
| | Seat | 18 | 19 | 17-21 | | | | |
| | Back | n/a | 18½ | 25½ | | | | |
| | Carton | 29¼ | 19¾ | 25½ | | | | |

CURVA



Aluminum Mid Back Mesh
Executive & Conference
Armless

| Product Code | | D | W | H | Weight lbs. | Cubic ft. | Cartons | List Price |
|---------------|---------|-----|-----|---------|-------------|-----------|---------|------------|
| CUR108 | Overall | 24½ | 19 | 34½-38½ | 25.5 | 7.12 | 1 | \$892 |
| | Seat | 18 | 19 | 17-21 | | | | |
| | Back | n/a | 18½ | 19 | | | | |
| | Carton | 29¼ | 19¾ | 25½ | | | | |



Nylon High Back Mesh
Executive & Conference

| | | | | | | | | |
|---------------|---------|-----|-----|---------|----|-------|---|-------|
| CUR109 | Overall | 24½ | 22¾ | 41½-45½ | 26 | 10.21 | 1 | \$892 |
| | Seat | 18 | 19 | 17-21 | | | | |
| | Back | n/a | 18½ | 26 | | | | |
| | Carton | 35 | 19¾ | 25½ | | | | |



Nylon Mid Back Mesh
Executive & Conference

| | | | | | | | | |
|---------------|---------|-----|-----|---------|----|------|---|-------|
| CUR111 | Overall | 24½ | 22¾ | 34½-38½ | 23 | 8.49 | 1 | \$706 |
| | Seat | 18 | 19 | 17-21 | | | | |
| | Back | n/a | 18½ | 19 | | | | |
| | Carton | 29¼ | 19¾ | 25½ | | | | |



Nylon Mid Back Mesh
Executive & Conference
Armless

| | | | | | | | | |
|---------------|---------|-----|-----|---------|----|------|---|-------|
| CUR112 | Overall | 24½ | 19 | 34½-38½ | 22 | 7.12 | 1 | \$706 |
| | Seat | 18 | 19 | 17-21 | | | | |
| | Back | n/a | 18½ | 19 | | | | |
| | Carton | 29¼ | 19¾ | 25½ | | | | |

CURVA



Nylon Mid Back Mesh Stool

| Product Code | | D | W | H | Weight lbs. | Cubic ft. | Cartons | List Price |
|---------------|---------|-----|-----|-------|-------------|-----------|---------|--------------|
| CUR115 | Overall | 24½ | 22¾ | 41-49 | 30 | 8.49 | 1 | <u>\$943</u> |
| | Seat | 18 | 19 | 23-31 | | | | |
| | Back | n/a | 18½ | 18½ | | | | |
| | Carton | 29¾ | 19¾ | 25½ | | | | |



Nylon Mid Back Mesh Stool Armless

| | | | | | | | | |
|---------------|---------|-----|-----|-------|----|------|---|--------------|
| CUR116 | Overall | 24½ | 19 | 41-49 | 29 | 7.12 | 1 | <u>\$943</u> |
| | Seat | 18 | 19 | 23-31 | | | | |
| | Back | n/a | 18½ | 18½ | | | | |
| | Carton | 28¾ | 16¾ | 25½ | | | | |



Aluminum High Back Mesh Lounge Armless






| | | | | | | | | |
|---------------|---------|-----|-----|-----|----|------|---|----------------|
| CUR120 | Overall | 24½ | 19 | 38¾ | 26 | 7.66 | 1 | <u>\$1,153</u> |
| | Seat | 18 | 19 | 14 | | | | |
| | Back | n/a | 18½ | 25½ | | | | |
| | Carton | 35 | 18 | 21 | | | | |



Aluminum Mid Back Mesh Lounge Armless

| | | | | | | | | |
|---------------|---------|-----|-----|-----|------|------|---|--------------|
| CUR124 | Overall | 24½ | 19 | 31½ | 24.5 | 5.80 | 1 | <u>\$943</u> |
| | Seat | 18 | 19 | 14 | | | | |
| | Back | n/a | 18½ | 18½ | | | | |
| | Carton | 28¾ | 16¾ | 20¾ | | | | |

CURVA

| | Product Code | | D | W | H | Weight lbs. | Cubic ft. | Cartons | List Price |
|--|----------------------------|---------|-----|-----|-----|-------------|-----------|---------|-----------------|
|  <p>Executive & Conference Soft Casters 5 pcs/set Dark Gray for Nylon Frame Models</p> | SOFTCASTERS-02 | Overall | 1¾ | 2½ | 3½ | 1.6 | 0.07 | 1 set | <u>\$55/set</u> |
| | | Carton | 4 | 12¼ | 2½ | | | | |
|  <p>Executive & Conference Soft Casters 5 pcs/set Silver for Aluminum Frame Models</p> | SOFTCASTERS-03 | Overall | 1¾ | 2½ | 3½ | 1.6 | 0.07 | 1 set | <u>\$55/set</u> |
| | | Carton | 4 | 12¼ | 2½ | | | | |
|  <p>Stool Soft Casters 5 pcs/set Compression Self-Braking Dark Gray for Nylon Frame Models</p> | SOFTCASTERS-04 | Overall | 1¾ | 2½ | 3½ | 1.4 | 0.07 | 1 set | <u>\$55/set</u> |
| | | Carton | 4 | 12¼ | 2½ | | | | |
|  <p>Glass Table Top [27" dia.]</p> | GLASSTOP-02 [27"] | Overall | 27 | 27 | 0.5 | 25.5 | 1.59 | 1 | <u>\$475</u> |
| | | Carton | 30½ | 30½ | 3 | | | | |
|  <p>Table Base</p> | CUR301 [table base] | Overall | 17½ | 22¾ | 11½ | 10.6 | 2.33 | 1 | <u>\$222</u> |
| | | Carton | 23¾ | 21¾ | 8 | | | | |

Glasstop and Table Base are shipped separately

CURVINNA

- Frame: steel tube seat frame and front leg. Arms and back legs: aluminum. Black plastic glides.
- Arms: available with arms or armless.
- Finish: aluminum titanium finish.
- Stacking: can stack up to 4 chairs with arms and up to 8 chairs without arms.
- Textile durability for seat and back mesh, 100,000 doublerubs.
- Passes Cal Technical Bulletin 117-2013.
- ANSI/BIFMA X5.1 General Purpose Office Chair certified.
- Made with 38% post-consumer (PC) & 42% pre-consumer (PI) aggregate recycled content.
- Dimensions: width [at arms] 23.5", [between arms] 21.5", [armless] 23"; seat height 17.5"; seat depth 17.5"; seat to top of back 15.75"; height: 33.25".
- Weight capacity: 250 lbs.
- Ships ready for minimal assembly to minimize transportation carbon footprint.
- Limited Lifetime Warranty.
(Please see details on our website)



CURVINNA



Guest Chair
2 pcs per carton
Assembled except for arms

| Product Code | | D | W | H | Weight lbs. | Cubic ft. | Cartons | List Price |
|---------------|---------|-----|-----|-----|-------------|-----------|---------|-----------------|
| CUR201 | Overall | 21¼ | 24½ | 33¼ | 16 | 12.54 | 1 | <u>\$562/ea</u> |
| | Seat | 17½ | 18½ | 17½ | | | | |
| | Back | n/a | 18½ | 15¾ | | | | |
| | Carton | 25¼ | 35¾ | 24 | | | | |

CRAZY HORSE

- Frame: solid wood. American ash.
- Frame finishes: Tuxedo Black, Court Walnut, Agate Grey and Natural Ash.
- 2.75" thick polyurethane contoured seat Comphie™ cushion. Slip cover field replaceable.
- Momentum textile durability for seat cushion: 100,000 doublerubs. Passes Cal Technical Bulletin 117-2013.
- ANSI/BIFMA X5.1 General Purpose Office Chair certified.
- Dimensions: width (front legs) 25", (between arms) 19.5"; seat height 19.5"; seat height 19.5"; seat depth 19.5"; seat to top of back 14.75"; height: 32.5".
- Weight capacity: 250 lbs.
- Ships assembled.
- Limited Lifetime Warranty.
(Please see details on our website)



CRAZY HORSE



Wood Side Chair
2 pcs per carton

| Product Code | | D | W | H | Weight lbs. | Cubic ft. | Cartons | Grade | List Price | Slip Cover Only |
|-------------------------------------|---------|-----|-----|-----|-------------|-----------|---------|--------|------------|-----------------|
| CRZ501 <i>(Tuxedo Black)</i> | Overall | 23 | 25 | 32½ | 22 | 13.31 | 1 | G1 | \$1,060/ea | - |
| CRZ503 <i>(Court Walnut)</i> | Seat | 19½ | 18¾ | 19½ | | | | G3 | \$1,123/ea | \$63/ea |
| CRZ504 <i>(Agate Grey)</i> | Back | n/a | 16¾ | 14¾ | | | | C.O.M. | \$1,123/ea | \$63/ea |
| CRZ505 <i>(Natural Ash)</i> | Carton | 25½ | 30¼ | 43 | | | | G4 | \$1,173/ea | \$113/ea |
| | | | | | | | | G5 | \$1,225/ea | \$165/ea |
| | | | | | | | | G6 | \$1,258/ea | \$198/ea |
| | | | | | | | | G7 | \$1,296/ea | \$236/ea |
| | | | | | | | | G8 | \$1,334/ea | \$274/ea |

MUSE

- Frame: gray powder coated steel tube 5/8" dia.
- Seat: shaped body shell of fiberglass reinforced polypropylene provides comfort and flexibility. Available in white and red.
- Legs: solid gas injected polypropylene create lightness and rigidity. Available colors: white or red for matching or mixing with body shell plus an optional color of highly realistic ash wood grained polypropylene.
- Optional 1.5" thick seat cushion upholstered in fabric. Slip cover field replaceable.
- Side table: 20" diameter, 1/2" thick top with radius edge, tempered silk screened back painted white glass. Ash wood grained polypropylene legs.
- Upholstery and foam CAL117 flame retardant compliant. Prop 65 toxic chemical free.
- ANSI/BIFMA X5.1 General Purpose Office Chair certified.
- Made with 33% post-consumer (PC) & 0% pre-consumer (PI) aggregate recycled content.
- Dimensions - width: 23.75"; height: 31.75"; seat height: (with cushion) 19.5", (without cushion) 18"; depth: 22"; seat to top of back: (with cushion) 12.25", (without cushion) 13.75"; table, width/depth: 20", height 18".
- Weight Capacity: 250 lbs.
- Ships ready to assemble to minimize transportation carbon footprint.
- Limited Lifetime Warranty.
(Please see details on our website)

MUSE



Shell & Frame
4 pcs per carton
order legs & cushions separately

| Product Code | | D | W | H | Weight lbs. | Cubic ft. | Cartons | Grade | List Price | Slip Cover |
|---------------------------------|---------|----|-----|-----|-------------|-----------|---------|-------|------------|------------|
| MUS01-WHT <i>(white)</i> | Overall | 20 | 23½ | 19 | 12.8 | 7.36 | 1 | | \$270/ea | |
| MUS01-RED <i>(red)</i> | Seat | 16 | 15½ | 14½ | | | | | \$270/ea | |
| | Carton | 24 | 27¼ | 19½ | | | | | | |



Legs
4 pcs per set
order shell & cushions separately

| | | | | | | | | | | |
|---------------------------------------|---------|----|----|-----|-----|------|---|--|-------|--|
| MUS02-WHT <i>(solid white)</i> | Overall | 1½ | 1½ | 16 | 2.5 | 0.11 | 1 | | \$80 | |
| MUS02-RED <i>(solid red)</i> | Carton | 3¼ | 3¼ | 16½ | | | | | \$80 | |
| MUS02-WOD <i>(wood grain)</i> | | | | | | | | | \$102 | |



Cushion
1 pc per carton
order shell & legs separately

| | | | | | | | | | Cushion w/Slip Cover | Slip Cover Only |
|------------------|---------|----|-----|----|---|------|---|--|----------------------|-----------------|
| MUS03-GRY | Overall | 16 | 15½ | 1½ | 2 | 0.32 | 1 | | G1 \$80 | - |
| | Carton | 17 | 16¼ | 2 | | | | | G3 \$143 | \$63 |
| | | | | | | | | | C.O.M. \$143 | \$63 |
| | | | | | | | | | G4 \$193 | \$113 |
| | | | | | | | | | G5 \$245 | \$165 |
| | | | | | | | | | G6 \$278 | \$198 |
| | | | | | | | | | G7 \$316 | \$236 |
| | | | | | | | | | G8 \$354 | \$274 |



Glass Table Top [20" dia.]

| | | | | | | | | | | |
|-------------------------------------|---------|-----|-----|-----|----|------|---|--|-------|--|
| GLASSTOP-01 <i>(20" dia)</i> | Overall | 20 | 20 | 0.5 | 14 | 0.94 | 1 | | \$270 | |
| | Carton | 23¼ | 23¼ | 3 | | | | | | |



Frame & Wood Grain Legs
3 legs per set

| | | | | | | | | | | |
|--------------------------------------|---------|-----|-----|----|-----|------|---|--|-------|--|
| MUS06-WOD <i>(table base)</i> | Overall | 17½ | 19½ | 18 | 7.3 | 0.80 | 1 | | \$195 | |
| | Carton | 14½ | 14½ | 6¾ | | | | | | |

Glasstop and Table Base are shipped separately

TIKAL



- Frame: sled base and bar stool, legs and foot rail of polished chrome plated 1/2" dia. steel rod with plastic glides; four leg, four prong spider base and table, legs and prongs of polished chrome plated 3/4" dia. steel tube.
- Finish: polished chrome plated base and legs.
- Seat: uniquely shaped shells, molded from solid polypropylene. Integral colors include Traffic White, Traffic Black, Traffic Red, Lime Green or London Gray.
- Optional fully upholstered seats in Karkalla Moss, Dark Pewter or Cranberry Red.
- Side table: base, 3 prong of polished chrome plated 3/4" dia. steel tube, matching finish with chair; top, 1/2" tempered silk screened back painted white glass, 20" diameter.
- Stacking: sled base and four leg stack up to 8 high standalone and up to 20 high on optional trolley.
- Upholstery and foam CAL117 flame retardant compliant. Prop 65 toxic chemical free.
- Passes Cal Technical Bulletin 117-2013.
- ANSI/BIFMA X5.1 General Purpose Office Chair certified
- Made of 35% post consumer (PC) & 0% pre consumer (PI) aggregate recycled content.
- Dimensions: sled base, W: 22.75", D: 21", H: 32", Seat H: 19"; four leg, W: 23", D: 21", H: 32", Seat H: 19"; four prong spider base, W: 20", D: 19", H: 32.5", Seat H: 19.5"; bar stool, W: 21", D: 20.5", H: 37.75", Seat H: 29.5"; table, W/D: 20", H: 18".
- Weight capacity: 250 lbs.
- Ships ready to assemble to minimize transportation carbon footprint.
- Limited Lifetime Warranty.
(Please see details on our website)

TIKAL



Shell
4 pcs per carton
order base separately



Upholstered Shell
4 pcs per carton
order base separately



Spider Base
4 pcs per carton
order shell separately



Four Leg Base
4 pcs per carton
order shell separately



Sled Base
4 pcs per carton
order shell separately

| Product Code | | D | W | H | Weight lbs. | Cubic ft. | Cartons | List Price |
|-------------------------------|---------|-----|-----|-----|-------------|-----------|---------|------------|
| TIK101 (traffic red) | Overall | 18½ | 20 | 15½ | 7.6 | 4.61 | 1 | \$112/ea |
| TIK102 (london gray) | Seat | 17¼ | 17½ | 14½ | | | | \$112/ea |
| TIK103 (lime green) | Carton | 21 | 21 | 18¼ | | | | \$112/ea |
| TIK104 (traffic white) | | | | | | | | \$112/ea |
| TIK105 (traffic black) | | | | | | | | \$112/ea |
| TIK121 (cranberry red) | Overall | 18¾ | 20¼ | 15¾ | 9.5 | 6.66 | 1 | \$201/ea |
| TIK122 (dark pewter) | Seat | 17 | 18 | 14 | | | | \$201/ea |
| TIK123 (moss) | Carton | 25 | 21¼ | 22 | | | | \$201/ea |
| TIK202 | Overall | 25 | 25 | 18 | 6 | 5.99 | 1 | \$136/ea |
| | Carton | 21¾ | 19¼ | 24¾ | | | | |
| TIK203 | Overall | 21 | 22¾ | 18¼ | 6.5 | 7.92 | 1 | \$136/ea |
| | Carton | 25¼ | 24¼ | 22½ | | | | |
| TIK204 | Overall | 21 | 22¾ | 18 | 9.8 | 6.92 | 1 | \$136/ea |
| | Carton | 24 | 23¼ | 21½ | | | | |

Refer to InStock Textile & Materials (pages 26-27) for standard and optional finishes.

TIKAL



Bar Stool Shell
2 pcs per carton
order base separately



Upholstered Bar Stool Shell
2 pcs per carton
order base separately



Bar Stool Base
2 pcs per carton
order shell separately



Stacking Chair Trolley
with locking rear casters



Glass Table Top (20" dia.)



Table base

| Product Code | | D | W | H | Weight lbs. | Cubic ft. | Cartons | List Price |
|-------------------------------|---------|-----|-----|-----|-------------|-----------|---------|------------|
| TIK111 (traffic red) | Overall | 17 | 17½ | 9½ | 5 | 2.17 | 1 | \$126/ea |
| TIK112 (london gray) | Seat | 16 | 16½ | 8¾ | | | | \$126/ea |
| TIK113 (lime green) | Carton | 18¼ | 18¼ | 11½ | | | | \$126/ea |
| TIK114 (traffic white) | | | | | | | | \$126/ea |
| TIK115 (traffic black) | | | | | | | | \$126/ea |
| TIK131 (cranberry red) | Overall | 17¼ | 17¾ | 9¾ | 5.9 | 2.52 | 1 | \$200/ea |
| TIK132 (dark pewter) | Seat | 15¾ | 17 | 8½ | | | | \$200/ea |
| TIK133 (moss) | Carton | 18½ | 18¼ | 13 | | | | \$200/ea |
| TIK205 | Overall | 20 | 21 | 29½ | 13.5 | 8.31 | 1 | \$362/ea |
| | Carton | 22 | 21 | 31½ | | | | |
| TROLLEY-02 | Overall | 30 | 34¾ | 58 | 34 | 11.03 | 1 | \$563 |
| | Carton | 30¼ | 26¼ | 24 | | | | |
| GLASSTOP-01 (20" dia) | Overall | 20 | 20 | 0.5 | 14 | 0.94 | 1 | \$270 |
| | Carton | 23¼ | 23¼ | 3 | | | | |
| TIK301 (table base) | Overall | 17 | 23 | 17½ | 8.8 | 3.31 | 1 | \$195 |
| | Carton | 18¾ | 16½ | 18½ | | | | |

Glasstop and Table Base are shipped separately

Refer to InStock Textile & Materials [pages 26-27] for standard and optional finishes.

POMMERAC



- Frame: sled base, legs of polished chrome plated 1/2" dia. steel rod; four leg, legs of polished chrome plated swaged steel tube, 7/8" to 5/8"; barstool, legs of polished chrome plated 7/8" dia. steel tube. All models have hemispherical plastic glides.
- Finish: polished chrome plated legs.
- Seat and back: pliable polypropylene available in integral black or white finish; suitable for limited outdoor use.
- Optional 5/8" seat pad with polyurethane upholstery available in black or white. Field replaceable. Compliant with CAL 117 flame retardant and Prop 65 toxic chemical free.
- Integral ganging device and glide included on sled base
- Stacking: sled base and four leg stack up to 7 high standalone and up to 20 high on optional trolley.
- ANSI/BIFMA X5.1 General Purpose Office Chair certified.
- Made with 35% post-consumer (PC) & 0% pre-consumer (PI) aggregate recycled content.
- Dimensions: sled base, W: 19.5", D: 21.6", H: 31.5", Seat H: 17.7"; four leg, W: 19.5", D: 19.9", H: 32", Seat H: 17.7"; bar stool, W: 21.5", D: 22.8", H: 45", Seat H: 31".
- Weight Capacity: 250 lbs.
- Ships ready to assemble to minimize transportation carbon footprint.
- Limited Lifetime Warranty.
(Please see details on our website)

POMMERAC



Sled Base
4 pcs per carton

| Product Code | | D | W | H | Weight lbs. | Cubic ft. | Cartons | List Price |
|---------------------------------|---------|-----|-----|-----|-------------|-----------|---------|-----------------|
| POM01-BLK <i>(black)</i> | Overall | 21½ | 19½ | 31½ | 10.7 | 7.62 | 1 | <u>\$173/ea</u> |
| POM01-WHT <i>(white)</i> | Seat | 16 | 17½ | 17¾ | | | | <u>\$173/ea</u> |
| | Back | n/a | 18½ | 15½ | | | | |
| | Carton | 20¼ | 23¼ | 28 | | | | |



Four Leg
4 pcs per carton

| | | | | | | | | |
|---------------------------------|---------|-----|-----|-----|----|------|---|-----------------|
| POM02-BLK <i>(black)</i> | Overall | 20 | 19½ | 32 | 11 | 7.62 | 1 | <u>\$173/ea</u> |
| POM02-WHT <i>(white)</i> | Seat | 16 | 17½ | 17¾ | | | | <u>\$173/ea</u> |
| | Back | n/a | 18½ | 15½ | | | | |
| | Carton | 20¼ | 23¼ | 28 | | | | |



Bar Stool
2 pcs per carton

| | | | | | | | | |
|---------------------------------|---------|-----|-----|-----|----|-------|---|-----------------|
| POM03-BLK <i>(black)</i> | Overall | 22¾ | 21½ | 45 | 15 | 12.09 | 1 | <u>\$423/ea</u> |
| POM03-WHT <i>(white)</i> | Seat | 16 | 17½ | 31 | | | | <u>\$423/ea</u> |
| | Back | n/a | 18½ | 15½ | | | | |
| | Carton | 22 | 24½ | 39¼ | | | | |



Seat Pad | Pommerac
1 pc per carton

| | | | | | | | | |
|---------------------------------|---------|-----|-----|----|-----|------|---|-------------|
| POM04-BLK <i>(black)</i> | Overall | 15¾ | 16½ | 1 | 2.4 | 0.41 | 1 | <u>\$80</u> |
| POM04-WHT <i>(white)</i> | Carton | 16¾ | 17 | 2½ | | | | <u>\$80</u> |



Trolley
with locking rear casters

| | | | | | | | | |
|-------------------|---------|-----|-----|-----|------|------|---|--------------|
| TROLLEY-01 | Overall | 18¼ | 28 | 26½ | 15.9 | 6.79 | 1 | <u>\$463</u> |
| | Carton | 18½ | 28¼ | 22½ | | | | |

Refer to InStock Textile & Materials [pages 26-27] for standard and optional finishes.

OROBLANCO



- Frame: available in black frame with matching black mesh and arm pads or white frame with gray mesh and arm pads. Side chair, steel tube chrome plated legs with plastic glides or optional casters. Training chair, steel tube chrome plated legs with casters.
- Mechanism: task full and mid-back, advanced Synchro-Tilt with seat slider adjustment (2"), stool is swivel, height adjustable and no tilt.
- Tilt: task full back, 4 positions, one lock position, three float positions & tension crank; task mid-back, three locking positions; stool, fixed back.
- Pneumatic seat height adjustment: task (4"), stool (8").
- Side mounted controls. Instructions also in Braille for task and stool.
- Built-in user guide for personal adjustment.
- Base: task full back, task mid-back and stool have polished cast aluminum 5 star base.
- Arms and armless: all models can be assembled with arms or armless.
- Arms: task full back, height adjustable (3.5"), arm pad slider (1.5") and arm pad pivot, lock kit is included for deactivating the slide and pivot; task mid-back and stool, height adjustable (3.5"), no slide or pivot ; training and guest, fixed arms.
- 2" thick polyurethane contoured seat for all models.
- Stool: with compression self-braking casters.
- Training: optional folding tablet and underseat basket, flip up seat for nesting and passive back recline.
- Seat upholstered in fabric. Slip cover field replaceable.
- Textile durability for back mesh and seat, 100,000 double-rubs. Passes CAL Technical Bulletin 117-2013.
- ANSI/BIFMA X5.1 General Purpose Office Chair certified.
- Made with 38% post-consumer (PC) & 18% preconsumer (PI) aggregate recycled content.
- Dimensions: please see the following page.
- Weight Capacity: 250 lbs.
- Ships ready to assemble to minimize transportation carbon foot print.
- Limited Lifetime Warranty.
(Please see details on our website)

OROBLANCO



Task Full Back

| Product Code | | D | W | H | Weight lbs. | Cubic ft. | Cartons | Grade | List Price | Slip Cover Only |
|----------------------------|---------|-------|-----|---------|-------------|-----------|---------|--------|------------|-----------------|
| 402B <i>(black)</i> | Overall | 21½ | 27¾ | 39-43 | 37 | 5.22 | 1 | G1 | \$625 | - |
| 402W <i>(white)</i> | Seat | 17-19 | 19½ | 17¼-21¼ | | | | G2 | \$650 | \$25 |
| | Back | n/a | 19 | 22 | | | | G3 | \$688 | \$63 |
| | Carton | 12¾ | 27 | 26 | | | | C.O.M. | \$688 | \$63 |
| | | | | | | | | G4 | \$738 | \$113 |
| | | | | | | | | G5 | \$790 | \$165 |
| | | | | | | | | G6 | \$823 | \$198 |
| | | | | | | | | G7 | \$861 | \$236 |
| | | | | | | | | G8 | \$899 | \$274 |



Task Mid Back

| | | | | | | | | | | |
|----------------------------|---------|---------|-----|---------|----|------|---|--------|-------|-------|
| 404B <i>(black)</i> | Overall | 23¼-25¼ | 26¾ | 36-40 | 39 | 5.22 | 1 | G1 | \$460 | - |
| 404W <i>(white)</i> | Seat | 17-19 | 19½ | 18¾-22¾ | | | | G2 | \$485 | \$25 |
| | Back | n/a | 19 | 18½ | | | | G3 | \$523 | \$63 |
| | Carton | 13 | 27¼ | 26 | | | | C.O.M. | \$523 | \$63 |
| | | | | | | | | G4 | \$573 | \$113 |
| | | | | | | | | G5 | \$625 | \$165 |
| | | | | | | | | G6 | \$658 | \$198 |
| | | | | | | | | G7 | \$696 | \$236 |
| | | | | | | | | G8 | \$734 | \$274 |



Side Chair
2 pcs per carton

| | | | | | | | | | | |
|----------------------------|---------|-----|-----|-----|----|------|---|--------|----------|----------|
| 403B <i>(black)</i> | Overall | 23½ | 21¾ | 34¾ | 21 | 6.61 | 1 | G1 | \$323/ea | - |
| 403W <i>(white)</i> | Seat | 17¾ | 18¾ | 17¼ | | | | G2 | \$348/ea | \$25/ea |
| | Back | n/a | 19 | 17¼ | | | | G3 | \$386/ea | \$63/ea |
| | Carton | 18 | 27 | 23¼ | | | | C.O.M. | \$386/ea | \$63/ea |
| | | | | | | | | G4 | \$436/ea | \$113/ea |
| | | | | | | | | G5 | \$488/ea | \$165/ea |
| | | | | | | | | G6 | \$521/ea | \$198/ea |
| | | | | | | | | G7 | \$559/ea | \$236/ea |
| | | | | | | | | G8 | \$597/ea | \$274/ea |



Hard Casters
4 pcs/set
for 403B/403W Side Chair

| | | | | | | | | | | |
|-------------------|---------|---|----|----|---|------|---|--|--|----------|
| 403CASTERS | Overall | 2 | 2¼ | 3½ | 1 | 0.06 | 1 | | | \$31/set |
| | Carton | 4 | 9¾ | 4 | | | | | | |

Refer to InStock Textile & Materials [pages 26-27] for standard and optional finishes.

OROBLANCO



Stool

| Product Code | | D | W | H | Weight lbs. | Cubic ft. | Cartons | Grade | List Price | Slip Cover Only |
|---------------------|---------|-----|-----|---------|-------------|-----------|---------|--------|------------|-----------------|
| 405B (black) | Overall | 23½ | 25¾ | 41-49 | 37 | 5.22 | 1 | G1 | \$690 | - |
| 405W (white) | Seat | 16½ | 20 | 23½-31½ | | | | *G2 | \$715 | \$25 |
| | Back | n/a | 19 | 18½ | | | | G3 | \$753 | \$63 |
| | Carton | 13 | 27¼ | 26 | | | | C.O.M. | \$753 | \$63 |
| | | | | | | | | G4 | \$803 | \$113 |
| | | | | | | | | G5 | \$855 | \$165 |
| | | | | | | | | G6 | \$888 | \$198 |
| | | | | | | | | G7 | \$926 | \$236 |
| | | | | | | | | G8 | \$964 | \$274 |

* Available 2nd half 2016



Training Chair w/casters,
flip up seat for nesting &
passive back recline
2 pcs per carton

| | | | | | | | | | | |
|---------------------|---------|-----|-----|-----|----|------|---|--------|----------|----------|
| 406B (black) | Overall | 25¼ | 25¾ | 33½ | 27 | 8.24 | 1 | G1 | \$550/ea | - |
| 406W (white) | Seat | 18½ | 19 | 18¾ | | | | *G2 | \$575/ea | \$25/ea |
| | Back | n/a | 19 | 15 | | | | G3 | \$613/ea | \$63/ea |
| | Carton | 22 | 25 | 26 | | | | C.O.M. | \$613/ea | \$63/ea |
| | | | | | | | | G4 | \$663/ea | \$113/ea |
| | | | | | | | | G5 | \$715/ea | \$165/ea |
| | | | | | | | | G6 | \$748/ea | \$198/ea |
| | | | | | | | | G7 | \$786/ea | \$236/ea |
| | | | | | | | | G8 | \$824/ea | \$274/ea |

* Available 2nd half 2016



Training Chair Tablet
2 pcs per carton

| | | | | | | | | | | |
|---------------------|---------|-----|-----|----|-----|------|---|--|----------|--|
| 407B (black) | Overall | 17 | 22¼ | 17 | 9.5 | 0.73 | 1 | | \$125/ea | |
| 407W (white) | Carton | 15½ | 17¼ | 4¾ | | | | | \$125/ea | |



Training Chair Basket
2 pcs per carton

| | | | | | | | | | | |
|------------|---------|-----|-----|----|-----|------|---|--|---------|--|
| 408 | Overall | 14¼ | 17½ | 9½ | 2.3 | 0.62 | 1 | | \$63/ea | |
| | Carton | 18¼ | 19 | 3¼ | | | | | | |

Refer to InStock Textile & Materials [pages 26-27] for standard and optional finishes.

OROBLANCO



Soft Casters

5 pcs/set

for all Oroblanco models

| Product Code | | D | W | H | Weight lbs. | Cubic ft. | Cartons | List Price |
|-----------------------|---------|----|-----|----|-------------|-----------|---------|-----------------|
| SOFTCASTERS-01 | Overall | 2¼ | 2¼ | 3¼ | 1.5 | 0.07 | 1 | <u>\$31/set</u> |
| | Carton | 4 | 11½ | 2½ | | | | |

AMBARELLA



- Back Frame: structural metal frame shapes the black non-stretch mesh sleeve to create a natural lumbar.
- Mechanism: advanced Synchro-Tilt with Seat Slider Adjustment (2”).
- Tilt: 3 lock positions & side mounted tension control knob.
- Pneumatic seat height adjustment (4”).
- Built-in user guide for personal adjustment.
- Polished cast aluminum 5 star base.
- Arms: available with arms or armless.
- Arm height adjustable (3”) and width adjustable (1.5”).
- 2” thick polyurethane contoured seat.
- Seat upholstered in fabric. Slip cover field replaceable.
- Textile durability for back mesh and seat, 100,000 double-rubs. Passes CAL Technical Bulletin 117-2013.
- ANSI/BIFMA X5.1 General Purpose Office Chair certified.
- Made with 35% post-consumer (PC) & 16% preconsumer (PI) aggregate recycled content.
- Dimensions - width: [at arms] 25.25”-27.25”; [between arms] 18”-20”; height: 37.25”-41.25”; seat height: 17”-21”; seat depth: 18”-20”; seat to top of back: 20”.
- Weight Capacity: 250 lbs.
- Ships ready to assemble to minimize transportation carbon foot print.
- Limited Lifetime Warranty. [Please see details on our website]

AMBARELLA



Task Chair

| Product Code | | D | W | H | Weight lbs. | Cubic ft. | Cartons | Grade | List Price | Slip Cover Only |
|----------------------------|---------|-------|-----|---------|-------------|-----------|---------|--------|------------|-----------------|
| 401B <i>[black]</i> | Overall | 27 | 27¼ | 37¼-41¼ | 44.5 | 4.24 | 1 | G1 | \$413 | - |
| | Seat | 18-20 | 18½ | 17-21 | | | | G2 | \$438 | \$25 |
| | Back | n/a | 18 | 20 | | | | G3 | \$476 | \$63 |
| | Carton | 11¼ | 26¼ | 26 | | | | C.O.M. | \$476 | \$63 |
| | | | | | | | | G4 | \$526 | \$113 |
| | | | | | | | | G5 | \$578 | \$165 |
| | | | | | | | | G6 | \$611 | \$198 |
| | | | | | | | | G7 | \$649 | \$236 |
| | | | | | | | G8 | \$687 | \$274 | |



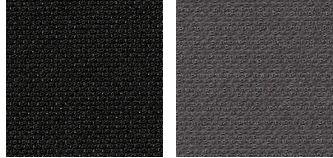
Soft Casters
5 pcs/set

| | | | | | | | | | | |
|-----------------------|---------|----|-----|----|-----|------|---|--|----------|--|
| SOFTCASTERS-01 | Overall | 2¼ | 2¼ | 3¼ | 1.5 | 0.07 | 1 | | \$31/set | |
| | Carton | 4 | 11½ | 2½ | | | | | | |

INSTOCK TEXTILES & MATERIALS

InStock Standard Textiles:

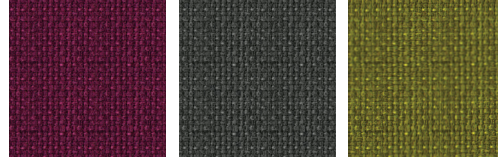
Barbadine [Grade 1]



Black

Coal

Karkalla [Grade 1]



Cranberry Red

Dark Pewter

Moss

InStock Leather:

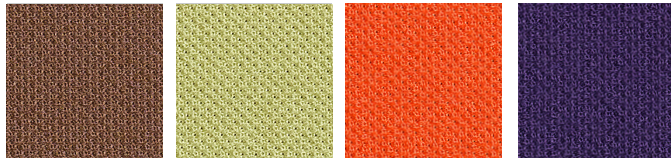
Monza



Graphite Black

InStock Optional Textiles:

Barbadine [Grade 2]



Terra

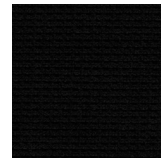
Celadon

Persimmon

Plum

InStock Mesh:

101

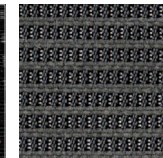


Black

102

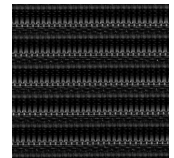


Black



Gray

103



Graphite

InStock Polypropylene:

001



Black

White

Red

Ash Wood Grain

InStock Polypropylene:

002



Traffic Red

London Gray

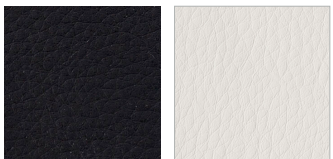
Lime Green

Traffic White

Traffic Black

InStock Polyurethane:

Bacuri

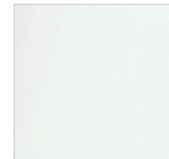


Black

White

InStock Glass:

110



White

Wood Finish:

Crazy Horse



Tuxedo Black

Agate Grey

Court Walnut

Natural Ash

INSTOCK TEXTILES & MATERIALS

- standard
 - optional
 - ▲ headrest
- HB High Back
FB Full Back
MB Mid Back

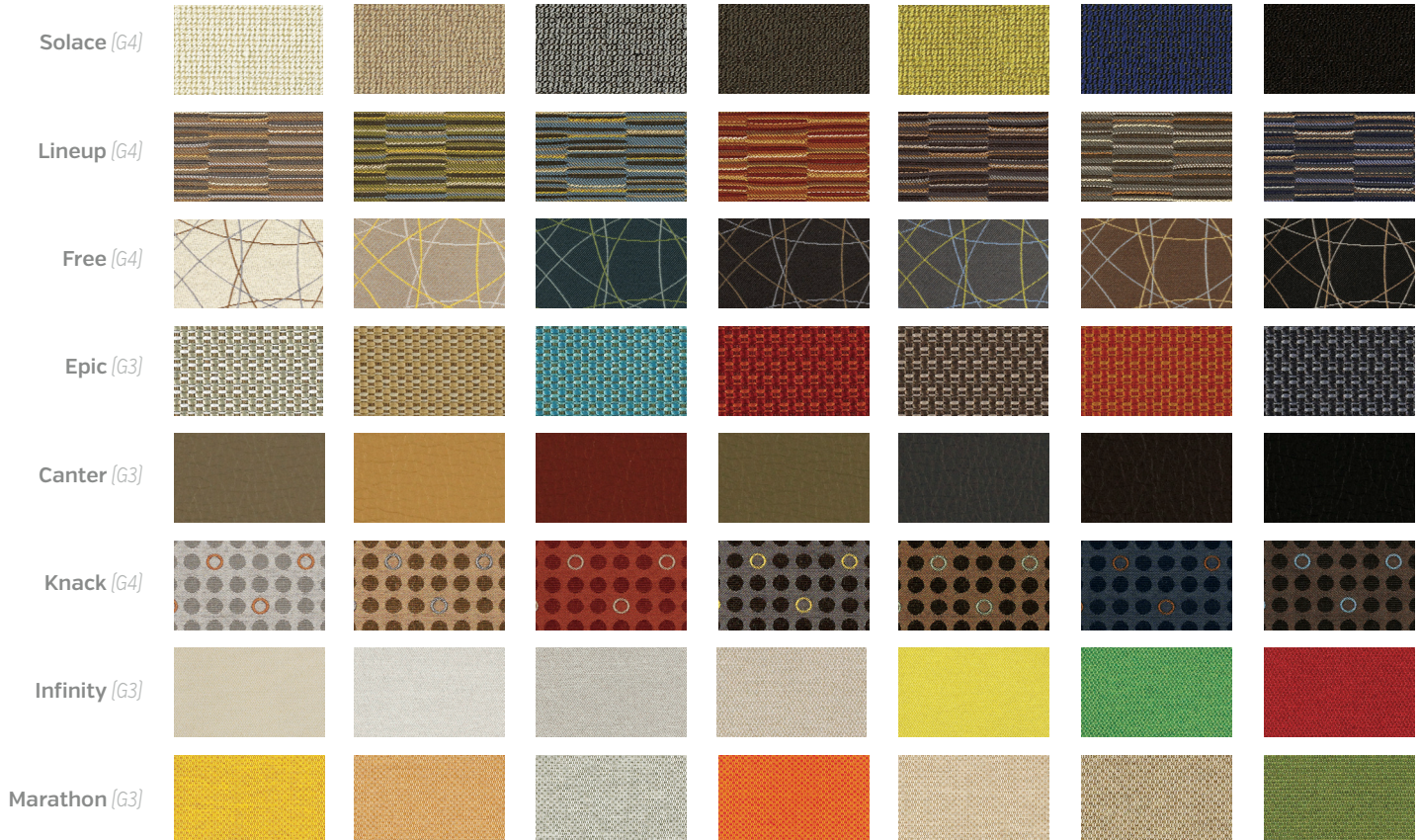
| | | Fabric | | | | | | | | | | Leather | Polyurethane | Mesh | Polypropylene | | | | | | Glass | Wood | | | | | | | | | |
|--------------------|----------|----------------------|------------------|-----------------|-----------------------|----------------------|------------------|------------------------|-----------------------|---------------|--------------|----------------------|--------------|--------------|----------------|-----------------|----------------|-------------------|-----------|-----------|---------|--------------|-----------------|-----------------|----------------|-------------------|-------------------|--------------|--------------|------------|-------------|
| | | Barbadoine Coal | Barbadoine Black | Barbadoine Plum | Barbadoine pap/simmon | Barbadoine Celestion | Barbadoine Terra | Karkalla Cranberry Red | Karkalla Dark Pewiter | Momentum Moss | Monza Fabric | Monza Graphite Black | Bacuri Black | Bacuri White | Mesh 101 Black | Mesh 102B Black | Mesh 102G Gray | Mesh 103 Graphite | 001 Black | 001 White | 001 Red | 001 Ash Wood | 002 Traffic Red | 002 London Gray | 002 Lime Green | 002 Traffic White | White Translucent | Tuvedo Black | Court Walnut | Agate Grey | Natural Ash |
| Curva | Exec | alu frame/leather HB | | | | | | | | | | ● | | | | ● | | | | | | | | | | | | | | | |
| | Exec | alu frame/leather MB | | | | | | | | | | ● | | | | ● | | | | | | | | | | | | | | | |
| | Exec | alu frame/mesh HB | | | | | | | | | | ▲ | | | | ● | | | | | | | | | | | | | | | |
| | Exec | alu frame/mesh MB | | | | | | | | | | | | | | ● | | | | | | | | | | | | | | | |
| | Exec | nylon frame/mesh HB | | | | | | | | | | ▲ | | | | ● | | | | | | | | | | | | | | | |
| | Exec | nylon frame/mesh MB | | | | | | | | | | | | | | ● | | | | | | | | | | | | | | | |
| | Stool | nylon frame/mesh MB | | | | | | | | | | | | | | ● | | | | | | | | | | | | | | | |
| | Lounge | alu frame/mesh HB | | | | | | | | | | | ▲ | | | | ● | | | | | | | | | | | | | | |
| | Lounge | alu frame/mesh MB | | | | | | | | | | | | | | | ● | | | | | | | | | | | | | | |
| | Table | top | | | | | | | | | | | | | | | | | | | | | | | | ● | | | | | |
| Curvinna | Side | alu/nylon frame | | | | | | | | | | | | | | ● | | | | | | | | | | | | | | | |
| Muse | Side | shell | | | | | | | | | | | | | | | | ○ | ○ | | | | | | | | | | | | |
| | | legs | | | | | | | | | | | | | | | | ○ | ○ | ○ | | | | | | | | | | | |
| | | cushion | ● | | | | | | ○ | | | | | | | | | | | | | | | | | | | | | | |
| | Table | top | | | | | | | | | | | | | | | | | | | | | | | | ● | | | | | |
| | | legs | | | | | | | | | | | | | | | | | | | ● | | | | | | | | | | |
| Tikal | Stack | shell | | | | | | | | | | | | | | | | | | | | ● | ● | ● | ● | ● | | | | | |
| | | upholstered shell | | | | | | ● | ● | ● | | | | | | | | | | | | | | | | | | | | | |
| | Table | top | | | | | | | | | | | | | | | | | | | | | | | | ● | | | | | |
| Pommerac | Stack | shell | | | | | | | | | | | | | | | | ○ | ○ | | | | | | | | | | | | |
| | | seat pad | | | | | | | | | | ○ | ○ | | | | | | | | | | | | | | | | | | |
| Oroblanco | Task | black frame/FB | ● | ○ | ○ | ○ | ○ | | ○ | | | | | | ● | | | | | | | | | | | | | | | | |
| | Task | white frame/FB | ● | ○ | ○ | ○ | ○ | | ○ | | | | | | ● | | | | | | | | | | | | | | | | |
| | Task | black frame/MB | ● | ○ | ○ | ○ | ○ | | ○ | | | | | | ● | | | | | | | | | | | | | | | | |
| | Task | white frame/MB | ● | ○ | ○ | ○ | ○ | | ○ | | | | | | ● | | | | | | | | | | | | | | | | |
| | Side | black frame | ● | ○ | ○ | ○ | ○ | | ○ | | | | | | ● | | | | | | | | | | | | | | | | |
| | Side | white frame | ● | ○ | ○ | ○ | ○ | | ○ | | | | | | ● | | | | | | | | | | | | | | | | |
| | Stool | black frame | ● | ○ | ○ | ○ | ○ | | ○ | | | | | | ● | | | | | | | | | | | | | | | | |
| | Stool | white frame | ● | ○ | ○ | ○ | ○ | | ○ | | | | | | ● | | | | | | | | | | | | | | | | |
| | Training | black frame | ● | ○ | ○ | ○ | ○ | | ○ | | | | | | ● | | | | | | | | | | | | | | | | |
| | Training | white frame | ● | ○ | ○ | ○ | ○ | | ○ | | | | | | ● | | | | | | | | | | | | | | | | |
| Ambarella | Task | black frame | ● | ○ | ○ | ○ | ○ | | ○ | | | | ● | | | | | | | | | | | | | | | | | | |
| Crazy Horse | Side | ash frame | ● | | | | | | ○ | | | | | | | | | | | | | | | | | ● | ● | ● | ● | | |

MOMENTUM TEXTILES

Momentum Textile Program Grades 3-8

idesk and Momentum Textiles are proud to announce their new partnership and textile program. Momentum has led the industry with a reputation in innovative and sustainable textile design. Please contact your sales representative for a new quick ship card featuring 72 fabric options, or visit "5 Clicks" at www.themomgroup.com to see the additional 1,400 graded-in fabrics available and specifications.

Momentum textiles are available for Oroblanco, Ambarella, Muse and Crazy Horse.



TERMS & CONDITIONS

General Information

Prices shown are list prices per piece or set, except split carton charge is for each split carton on order. idesk reserves the right to make changes in design or construction without prior notice. Measurements listed in price book are rounded off. Please contact Customer Service for exact measurements.

Availability

idek maintains a high level of inventory in our InStock Program throughout our regional distribution centers. Our inventory is replenished on a regular basis, and orders are filled on a first come first served basis once a confirmed order is placed and an order acknowledgement is received.

A 50% deposit is required in order to hold inventory based on availability. idesk will hold product up to 14 calendar days. Deposit will be forfeited after this period unless a written cancellation request is submitted within 14 calendar days or a confirmed purchase order is received. Please note: large orders may require an extended lead time. In the event an item is not available, three options may apply that require written authorization from the dealer:

Option 1

Partial ship available quantity and back order remaining items – minimum drop off charges (if applicable) apply to BOTH the initial partial shipment as well as any subsequent back order shipments.

Option 2

Request transfer of out of stock item from an alternate regional distribution center– customer is responsible for any additional freight costs associated with the transfer as our price does not reflect these additional costs.

Option 3

Hold until complete order is available through idesk's regular inventory replenishment for the distribution center where the dealer is based.

Special Order Program

A 100% deposit is required to enter your order into production. A minimum quantity is required, please call for details. Products are shipped to any point of destination within the continental USA in approximately 12-16 weeks.

Ordering Procedure

An approved credit application is required to open a idesk account and process an order. Orders can only be accepted from authorized idesk dealers. Orders from customers without a previous idesk credit rating will not be accepted without satisfactory references accompanying the order or other arrangements being made. idesk does not accept verbal purchase orders or revisions. Orders are accepted via fax or email only. Please fax or email purchase orders to the corresponding region in which you are based [these are listed under Contact Information].

Order Acknowledgement

idek sends acknowledgements on all orders. Please examine the acknowledgement carefully and advise us immediately of any discrepancies. The Order Acknowledgment is the final agreement between idesk and the customer, superseding all previous communication regarding that order.

Cancellation and Order Changes

InStock Program

Cancellations or revisions will not be accepted after the order has shipped.

Special Order Program

Cancellations or revisions will not be accepted after the order has been acknowledged and entered into production and any deposit made will be forfeited.

Delivery Information

All shipments are FOB point of shipment, with freight prepaid in the continental 48 states. Pricing is based on standard delivery (8am to 5pm Monday through Friday). idesk reserves the right to select the most appropriate carrier and routing on all shipments. Orders requiring special delivery services (including but not limited to the following) will incur additional charges:

- assembly charges • redelivery charges • inside delivery • installation
- call before delivery • no dock delivery • non standard delivery time
- residential delivery • appointment delivery

Drop Shipments and Zone Pricing

Please contact Customer Service for pricing on orders requiring shipment to a destination outside the state where the dealer is located.

Claims

Freight Damage | Refusals | Shortages

idek Customer Service will administer the filing of these claims if the order is shipped via our designated carriers. All claims must be filed with idesk within 15 calendar days of receipt of goods. Please allow 48 hours for claims to be processed. Claim will be disputed if product is moved from original 'ship to' location. In order to expedite the process, the following documents are required to file a claim:

- Copy of bill of lading with notations for any visible damages, refusals, or shortages

idek will not be responsible for filing claims if order is shipped via the customer's selected carrier.

Manufacturing Defect | Concealed Damage

Claims for a manufacturing defect or concealed damage must be filed with idesk within 15 days of receipt of goods. Please allow 48 hours for claims to be processed. The following documents are required to process your claim:

- Digital photos of product and cartons
- idesk claim form

In order to send out an immediate replacement to fulfill your customer needs pending resolution of the claim, the following document is required:

- A signed idesk disclaimer regarding product responsibility

Warranty Issues

Claims for warranty issues must be filed with idesk. The following documents are required:

- Original idesk invoice number
- Detailed description of issues

Returns

Due to the likelihood of damage, idesk discourages product returns. In the event a product return is found necessary, we will make every attempt to assist our customers to keep the product in the field. Please contact Customer Service for assistance with this service. If attempts to keep the product in the field are unsuccessful, idesk will allow returns on stock items only and issue a Return Merchandise Authorization (RMA) with the following stipulations:

- a 50% restocking fee will apply
- freight charges are prepaid by dealer
- product has never been removed from original carton
- once the order has been placed, assembled product will not be accepted as a return
- product must be returned within 30 days of RMA issue date
- credit will not be issued if product is returned damaged

Credit will not be provided on any items returned without an RMA, or on merchandise that has been subject to freight damage, missing parts, usage or been removed from the original carton. Returns without a pre-authorized RMA will be refused. idesk will not be responsible for resolving damage and or freight claims on returned product.

Limited Lifetime Warranty

The Company warrants to the original end user that this product will be free from defects in its material and workmanship when used in a Single Shift (standard 8 hour day, 5 days per week) by a person weighing less than 250 lbs. except as set forth below:

5 year warranty for fabric, leather, foam, knit back, mesh and non-structural plastic.

THE COMPANY DOES NOT WARRANT:

- Product abuse or misuse

- User modification of or attachments to the product
- Products or parts not used, maintained or installed in accordance with the Company's installation, maintenance and/or applicable guidelines
- Products that are exposed to extreme environmental conditions and/or have been subject to improper storage
- Floor samples or display models
- Products purchased "as is" and/or secondhand
- Products sold by unauthorized dealers
- Creasing and/or gathering of textiles during upholstery application process
- Minor irregularities of color, surface, grain, and texture
- Minor variations of color in textiles
- Variations of texture and natural markings such as neck wrinkles, scratches, backbone marks and stretch marks in leather
- Color matching of textiles exactly to samples, swatches or prior purchases

The Company will repair or replace with a comparable product, at its option, without charge to the original purchaser, only defective products or parts found defective during the Warranty Period. If requested by the Company, the original purchaser must return the part or product with freight or other shipping charges prepaid.

This warranty shall be effective for the applicable time period beginning from date of purchase as shown on original purchaser's original receipt or other proof of purchase.

Under no circumstance, including but not limited to breach of contract, breach of warranty or negligence, shall the Company be liable for lost profits, loss of goodwill, stored data, general, special, consequential or exemplary damages, even if the Company had notice of these damages or they were foreseeable. The Company shall not be responsible for verifying dealer's or customer's description of needs, data, or the fitness for a particular purpose of goods. The Company's liability in all cases shall be limited to repair or replacement of the defective parts, or the purchase price of the product. Damages resulting from misuse, abuse, alteration, negligence, or accidents are not covered under this warranty.

Except as otherwise provided, the Company makes no other warranties, expressed or implied, including but not limited to the warranties of merchantability and fitness for a particular purpose.

Release Of Liability

Cherryman Industries shall not be held liable for any injuries or damage resulting from the decision of the user to change from the standard safety brake caster to free roll casters.

Care and Maintenance

- Refer to the specific fabric and finish pages.

CONTACT INFORMATION

General Inquiries

Tel: 888.471.1616

Email: info@ideskinc.com

idesk Headquarters

2100 E Grand Ave, Suite 600
El Segundo, CA 90245

Business Hours: 8:30am – 5:00pm [PST]

Tel: 888. 471. 1616

idesk Midwest Distribution Center

2413 Prospect Drive, Suite 151
Aurora, IL 60502

Covers: KS, NE, ND, SD, MN, WI, IL, MI, IN,
KY, OH, WV, IA, MO, Central Canada

Business Hours: 8:30am – 5:00pm [EST]

Will Call Hours: 8:30am – 4:00pm [EST]

Tel: 888. 471. 1616

Order Fax: 888. 738. 7048

Order Email: orderil@cherrymanindustries.com

Claims Email: claimsil@cherrymanindustries.com

idesk Western Distribution Center

13611 Jurupa Ave
Fontana, CA 92337

Covers: HI, WA, OR, ID, MT, WY, CA, NV, UT,
AZ, Western Canada

Business Hours: 8:30am – 5:00pm [PST]

Will Call Hours: 7:30am – 4:00pm [PST]

Tel: 888. 471. 1616

Order Fax: 888. 738. 7047

Order Email: orderca@cherrymanindustries.com

Claims Email: claimsc@cherrymanindustries.com

idesk Southeast Distribution Center

780 Douglas Hill Road, Suite 200
Lithia Springs, GA 30122

Covers: TN, MS, AL, GA, SC, NC, FL

Business Hours: 8:30am – 5:00pm [EST]

Will Call Hours: 8:30am – 4:00pm [EST]

Tel: 888. 471. 1616

Order Fax: 888. 217. 0173

Order Email: orderga@cherrymanindustries.com

Claims Email: claimsga@cherrymanindustries.com

idesk Central Distribution Center

1421 N. Cockrell Hill Road, Suite 300
Dallas, TX 75211

Covers: TX, NM, CO, OK, AR, LA

Business Hours: 8:30am – 5:00pm [CST]

Will Call Hours: 8:30am – 4:00pm [CST]

Tel: 888. 471. 1616

Order Fax: 888. 910. 1160

Order Email: ordertx@cherrymanindustries.com

Claims Email: claimstx@cherrymanindustries.com

idesk Northeast Distribution Center

35 Thatcher Road
South Brunswick, NJ 08810

Covers: ME, NH, VT, MA, RI, CT, NY, NJ, PA, DE,
MD, VA, Eastern Canada

Business Hours: 8:30am – 5:00pm [EST]

Will Call Hours: 8:30am – 4:00pm [EST]

Tel: 888. 471. 1616

Order Fax: 888. 575. 2060

Order Email: ordernj@cherrymanindustries.com

Claims Email: claimsnj@cherrymanindustries.com

ideskinc.com



idesk HQ El Segundo CA



Fontana CA (West)



Dallas TX (Central)



Aurora IL (Midwest)



Lithia Springs GA (Southeast)



South Brunswick NJ (Northeast)



